

Centre Number						Candidate Number				
Surname										
Other Names										
Candidate Signature										

For Examiner's Use	
Examiner's Initials	
Question	Mark
1	
2	
3	
4	
5	
6	
7	
TOTAL	



General Certificate of Education  
Advanced Subsidiary Examination  
June 2013

# Mathematics

# MPC1

## Unit Pure Core 1

Monday 13 May 2013 1.30 pm to 3.00 pm

<p><b>For this paper you must have:</b></p> <ul style="list-style-type: none"> <li>the blue AQA booklet of formulae and statistical tables.</li> </ul> <p>You must <b>not</b> use a calculator.</p>	
---	--

### Time allowed

- 1 hour 30 minutes

### Instructions

- Use black ink or black ball-point pen. Pencil should only be used for drawing.
- Fill in the boxes at the top of this page.
- Answer **all** questions.
- Write the question part reference (eg (a), (b)(i) etc) in the left-hand margin.
- You must answer each question in the space provided for that question. If you require extra space, use an AQA supplementary answer book; do **not** use the space provided for a different question.
- Do not write outside the box around each page.
- Show all necessary working; otherwise marks for method may be lost.
- Do all rough work in this book. Cross through any work that you do not want to be marked.
- The use of calculators is **not** permitted.

### Information

- The marks for questions are shown in brackets.
- The maximum mark for this paper is 75.

### Advice

- Unless stated otherwise, you may quote formulae, without proof, from the booklet.
- You do not necessarily need to use all the space provided.



J U N 1 3 M P C 1 0 1



QUESTION  
PART  
REFERENCE

**Answer space for question 1**

A large rectangular area with horizontal dotted lines for writing an answer.

**Turn over** ►





QUESTION  
PART  
REFERENCE

**Answer space for question 2**

A large rectangular area containing horizontal dotted lines for writing an answer.

**Turn over ►**











QUESTION  
PART  
REFERENCE

**Answer space for question 4**

A large rectangular area containing horizontal dotted lines for writing an answer.

**Turn over ►**



QUESTION  
PART  
REFERENCE

**Answer space for question 4**

A large rectangular area containing 25 horizontal dotted lines for writing an answer.



QUESTION  
PART  
REFERENCE

**Answer space for question 4**

A large rectangular area containing horizontal dotted lines for writing an answer.

**Turn over ►**





QUESTION  
PART  
REFERENCE

**Answer space for question 5**

A large rectangular area with horizontal dotted lines for writing an answer.

**Turn over ►**



**6** A curve has equation  $y = x^5 - 2x^2 + 9$ . The point  $P$  with coordinates  $(-1, 6)$  lies on the curve.

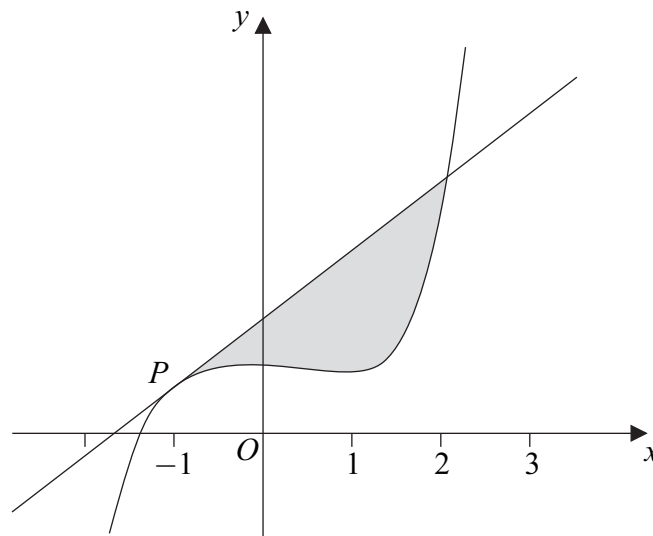
**(a)** Find the equation of the tangent to the curve at the point  $P$ , giving your answer in the form  $y = mx + c$ . (5 marks)

**(b)** The point  $Q$  with coordinates  $(2, k)$  lies on the curve.

**(i)** Find the value of  $k$ . (1 mark)

**(ii)** Verify that  $Q$  also lies on the tangent to the curve at the point  $P$ . (1 mark)

**(c)** The curve and the tangent to the curve at  $P$  are sketched below.



**(i)** Find  $\int_{-1}^2 (x^5 - 2x^2 + 9) dx$ . (5 marks)

**(ii)** Hence find the area of the shaded region bounded by the curve and the tangent to the curve at  $P$ . (3 marks)

QUESTION  
PART  
REFERENCE

**Answer space for question 6**

.....

.....

.....

.....

.....

.....

.....

.....



QUESTION  
PART  
REFERENCE

**Answer space for question 6**

A large rectangular area with horizontal dotted lines for writing an answer.

**Turn over ►**



QUESTION  
PART  
REFERENCE

**Answer space for question 6**

A large rectangular area with horizontal dotted lines for writing an answer.





QUESTION  
PART  
REFERENCE

**Answer space for question 6**

A large rectangular area with horizontal dotted lines for writing an answer.

**Turn over ►**



7 The quadratic equation

$$(2k - 7)x^2 - (k - 2)x + (k - 3) = 0$$

has real roots.

- (a) Show that  $7k^2 - 48k + 80 \leq 0$ . (4 marks)
- (b) Find the possible values of  $k$ . (4 marks)

QUESTION  
PART  
REFERENCE

**Answer space for question 7**





